



RENTAL CATALOGUE

 **PRESTON RENTALS**

COUNT ON US

888 399 DECK (3325) | prestonrentals.com

CONTENTS

1-2

SUPERCRAANE

**MINI CRANES &
HYDRAULIC CRAWLER CRANES
CRANE ACCESSORIES**

3-4

SUPERDECK[®]

RETRACTABLE LOADING PLATFORM SYSTEM

5

SUPERSHORE & SUPERCAGE

7-8

ACCESSORIES

**FOR OVER 50 YEARS, PRESTON RENTALS HAS PROVIDED
QUALITY CONSTRUCTION EQUIPMENT RENTAL AND SERVICES
THAT OUR CUSTOMERS HAVE COME TO COUNT ON.**

As a leader in the provision of specialist construction, infrastructure, civil, and commercial equipment rental, we are proud of our people and our reputation as a trusted and reliable customer-centric team.

Our range of quality products has been thoughtfully selected to deliver solutions for construction challenges worldwide. Preston Rentals believes in hard work, constant communication, and attention to detail to get the job done.

We provide experienced advice, quality equipment and solutions focused on your business needs. Plus, we are a great team of people who love what we do!





MC285C

SPECIFICATIONS

Crane Capacities	6,210lb x 4.5 ft
Max Lifting Height	31.8'
Max Working Radius	26.9'
Boom Length & Range	8.3' - 28.1' Range 0°-76°

DIMENSIONS

Length	9'2" - 10'9"
Width	2'6"
Height	4'10"
Weight	4,390lbs (Diesel)



MC285CB-3

SPECIFICATIONS

Crane Capacities	6,210lb x 4.5 ft
Max Lifting Height	31.8'
Max Working Radius	26.9'
Boom Length & Range	8.3' - 28.1' Range 0°-76°

DIMENSIONS

Length	9'2" - 10'9"
Width	2'6"
Height	4'10"
Weight	4,765lbs (Diesel/Electric)



MC305C

SPECIFICATIONS

Crane Capacities	6,560lb x 8ft
Max Lifting Height	47.7'
Max Working Radius	41.4'
Boom Length & Range	45' Range -11°-83°

DIMENSIONS

Length	13'9"
Width	4'3"
Height	6'5"
Weight	8,900lbs



UNIC

URW-376

SPECIFICATIONS

Crane Capacities	6,680lb x 8ft
Max Working Radius	49'
Max Lifting Height	47' 5"
Boom Length & Range	47' 11" Range 0°-80°

DIMENSIONS

Length	14' 3"
Width	4'3"
Height	5' 9"
Weight	8,760 lbs





MC405C

SPECIFICATIONS

Crane Capacities	8,480lb x 8.5 ft
Max Lifting Height	55.1'
Max Working Radius	52.4'
Boom Length & Range	54' Range -0°-80°

DIMENSIONS

Length	16'4"
Width	4'7"
Height	6'6"
Weight	13,000lbs



MC815C

SPECIFICATIONS

Crane Capacities	17,830lb at 7.5'
Max Lifting Height	84'
Max Working Radius	61.6'
Boom Length & Range	64.3' w/ 20' jib Range -0°-80°

DIMENSIONS

Length	20'4"
Width	5'9"
Height	8'2"
Weight	22,060lbs



UNIC



URW-706

SPECIFICATIONS

Crane Capacities	13,230lb at 9'10"
Max Lifting Height	64'
Max Working Radius	61'
Boom Length & Range	63' Range -0°-80°

DIMENSIONS

Length	18'5"
Width	5'3"
Height	7'3"
Weight	19,160lbs



CC1485S

SPECIFICATIONS

Crane Capacities	13,220lb at 8.5'
Max Lifting Height	73'
Max Working Radius	73'
Boom Length & Range	53' w/ 20' jib Range -4°-80°

DIMENSIONS

Length	21'5"
Width	8'2"
Height	9'8"
Weight	34,480lbs



Preston Hire offers a range of crane accessories, tailored to suit any hire needs. For more information about accessory items, speak to a SuperCrane™ specialist to find out what best suits your requirements.

Accessories available:



Chains/Slings - All purpose lifting equipment.



Two Way Radios - For communication.



Lever Block/Chain Block - Lever blocks are a manual hoist using a ratchet and pawl mechanical configuration to lift, lower, or pull a load and to apply or release tension.



Headache Ball - An auxiliary hook that can be hooked on a crane.



Remote & Cable - Cable remote controller for remote machine operation.



Glass Lifter - A convenient way to lift glass, metal, ceramic and other materials and position them for fixing. Vacuum technology is employed to grip the surface, making glass lifters an easy lifting solution.



2.2

DIMENSIONS

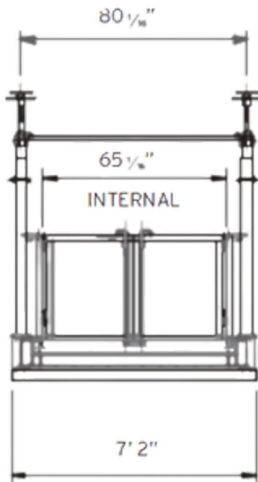
Max. Outboard Width Of Deck 206' 11/16" 7'2"

CAPACITY

Max. Load 11,023lbs
Tare Weight 5,000lbs

PROP OR BOLTDOWN OPTIONS AVAILABLE

*Custom solutions AVAILABLE ON REQUEST



Available accessories:



Extended Side Panels



Deck Trolley



Loading Platforms Ramp



2.6

DIMENSIONS

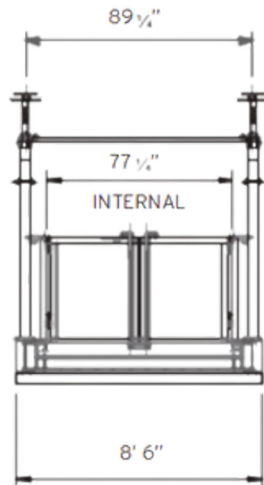
Max. Outboard Width Of Deck 206' 11/16" 8'6"

CAPACITY

Max. Load 11,023lbs
Tare Weight 5,000lbs

PROP OR BOLTDOWN OPTIONS AVAILABLE

*Custom solutions AVAILABLE ON REQUEST





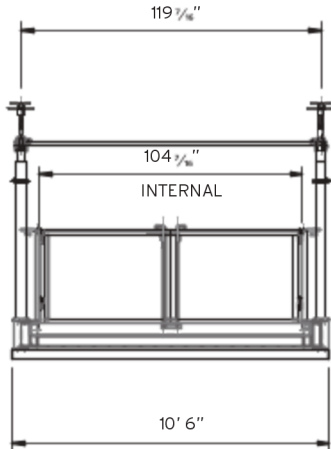
3.2
DIMENSIONS

Max. Outboard Width Of Deck 206' 11/16"
10'6"

CAPACITY

Max. Load 11,023lbs
Tare Weight 5,000lbs

PROP OR BOLTDOWN OPTIONS AVAILABLE



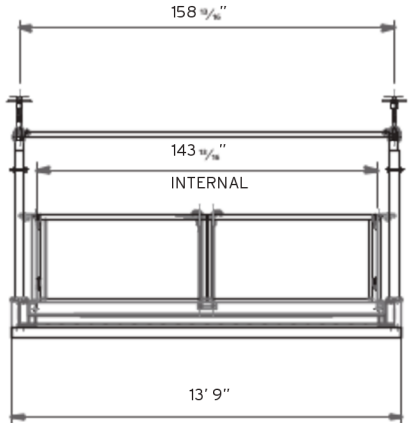

4.2
DIMENSIONS

Max. Outboard Width Of Deck 206' 11/16"
13'9"

CAPACITY

Max. Load 11,023lbs
Tare Weight 5,000lbs

PROP OR BOLTDOWN OPTIONS AVAILABLE



Available accessories:



Extended Side Panels



Deck Trolley



Loading Platforms Ramp



Preston Rentals **SuperCages™** provide flexibility to load difficult & cumbersome materials safely.

DIMENSIONS & CAPACITIES:

- The SuperCages™ interior dims 13'2" L x 6'4" W x 45" H.
- 5,000lbs loading capacity.
- Tare weight (empty) 3,000lbs.

FEATURES:

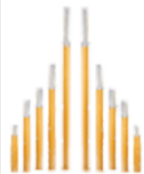
- Steel tube frame.
- Diamond plate steel floor.
- Expanded metal side panels.
- 4 pad eyes for top rigging.
- Fold-down ramp for easy loading and unloading.
- Designed to meet or exceed ASME B30.20 standards.
- Minimizes wasted time and the hassle of carting equipment and materials through the man-lift.



Preston Rentals offers a wide range of intelligent shoring rental solutions for those working in the construction industry. Our extensive range of adjustable shoring is available for rent across North America, ensuring we can always deliver the quality shoring rental solution you need.

As a company that has been supporting the construction industry for over 50 years, Preston Rentals has a thorough understanding of shoring needs. We offer quality, industry-leading construction propping systems, expert advice, and support to make your job easier.

MODEL	LIFTING CAPACITY (MAX WEIGHT)	LENGTH RANGE	WEIGHT
MP350	20,458 LBF	6.4 – 11.5 ft	43 lbs
MP480	19,896 LBF	8.5 – 15.8 ft	55 lbs
MP625	12,634 LBF	14 – 20.5 ft	77 lbs





SPECIALISED EQUIPMENT RENTAL SOLUTIONS

Preston Rentals (NV) LLC

5168 W. Eldorado Lane Las Vegas, NV 89139
sales@prestonrentals.com

Preston Rentals (CA) LLC

14726 Ramona Ave, Suite 445 Chino, CA 91710
sales@prestonrentals.com

Preston Rentals (TX) LLC

3517 2nd Avenue S. Texas City, TX 77590
sales@prestonrentals.com

Preston Rentals (CO)

1900 W Hamilton Place Englewood, CO 80110
sales@prestonrentals.com



COUNT ON US

888 399 DECK (3325) | prestonrentals.com